



Fog Force™ Technical Information Bulletin

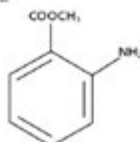
WHAT IS FOG FORCE™?

Fog Force™ is an aerosol bird repellent formulated from Methyl Anthranilate and used for the non-lethal control of birds. Methyl Anthranilate, the active ingredient, is a food grade repellent which exceeds US Food Chemical Codes (FCC) specifications, and is classified as Generally Recognized As Safe (GRAS) by the Expert Panel of the Flavor & Extract Manufacturers Association (FEMA). Methyl Anthranilate is an additive to foods, food flavors, and fragrances and is used as a flavoring agent in beverages, ice creams, candy, gelatins, puddings and chewing gum.

CHEMICAL & PHYSICAL PROPERTIES

Common Name: Methyl Anthranilate
 Chemical Name: methyl 2-aminobenzoate
 Active Ingredient: 40% methyl anthranilate
 60% inert ingredients
 Water Solubility: Insoluble
 Vapor Pressure: 5.5mm Hg @ 25°
 CAS no: 134-20-3
 Boiling Point: 208° C, 406° F
 Freezing Point: -40° C
 Flash Point: 248° F
 Extinguishing Media: Dry chemical foam
 Explosion Hazard: Not a fire or explosion hazard when stored under normal conditions. Closed containers may explode when exposed to extreme heat due to buildup of pressure.

Signal Word: Caution
 Appearance and Odor: Clear blue liquid, grape-like odor
 Specific Gravity: ~0.95 @ 25° C
 Molecular Formula: C₈H₉NO₂
 Molecular Weight: 151.17
 Structural Formula:



APPLICATIONS This product may be used to repel birds such as starlings, blackbirds, cowbirds, gulls, Canada geese, mallards and other birds that have become a nuisance or health hazard in the target area.

FOGGING RESTRICTIONS Hold the fog generator at least 5 feet from any object, painted surface and especially plants and shrubbery to avoid discoloration from direct contact with concentrated Rejex-it® Fog Force™ or the heat when using thermal foggers. Do not smoke while applying this product. Minimize direct exposure to humans, pets, domestic animals or non-target wildlife.

INDOOR FOGGING APPLICATIONS (warehouses, hangars, garages, assembly plants, etc.): Apply Rejex-it® Fog Force™ undiluted at a rate not to exceed an ounce per 10,000 cubic feet of space.

OUTDOOR FOGGING APPLICATIONS

(electrical substations, structures and buildings, trees and shrubs, airports and open areas, golf courses, lawns, sports fields, parks, around lakes and ponds, harbors, boat docks, day cares, hospitals, and other outdoor areas): General directions are to apply Rejex-it® Fog Force™ undiluted at a rate of 6-8 ounces per acre (43,500 sq. ft.) of area.

Point fog generator in the general direction of the nuisance birds. Expose as many birds as possible to the fog for fast and lasting results. For roosting birds, fog in the evening when most of the birds have arrived, but before it gets too dark for the birds to leave once exposed to the fog. To control Canada geese, apply at any time when they are feeding or roosting, except when they sit on a nest during breeding season. For other species, the best time depends on the species habits and time of year. Several treatments, 1 to 4 days apart may be required for removal of all nuisance birds.

For automated fogging applications, follow the manufacturer's instructions.

Precautions: Please consult the product label and current Material Safety Data Sheet (MSDS) for precautionary information, first aid and toxicology. To obtain a copy of the MSDS or label, please visit our website: www.rejexit.com or call Rejex-it toll free: 1-866-53-BIRDS - (1-866-532-4737).

PACKAGE SIZES

2x2-1/2 Gal containers
 250 Gal totes
 4x1 Gal containers
 55 Gal barrel

CASES

36 cases/pallet
 1 tote/pallet
 36 cases/pallet

FOOD PRODUCTS CONTAINING METHYL ANTHRANILATE

Fruit juices	16 ppm
Alcoholic beverages	.02 ppm
Ice cream/sherberts	21 ppm
Candy	56 ppm
Baked goods	20 ppm
Gelatins/puddings	23 ppm
Chewing gum	2200 ppm

NATURALLY OCCURRING SOURCES OF METHYL ANTHRANILATE

Concord Grapes	Orange Blossoms
Jasmine Blossoms	Acacia Blossoms
Gardenia Blossoms	Neroli Oil

Emergency 24 Hour First Aid: 1-800-892-0099

The information contained herein is, to our knowledge, accurate as of the published date of this bulletin. Rejex-it® continues to gather additional information as to the efficacy, toxicology, protective procedures and equipment, etc., and the foregoing is inherently interim and incomplete.

THIS IS NOT A LABEL AND DOES NOT PROVIDE COMPLETE USE INFORMATION. READ ENTIRE LABEL. USE STRICTLY IN ACCORDANCE WITH PRECAUTIONARY STATEMENTS AND DIRECTIONS AND WITH APPLICABLE STATE AND FEDERAL REGULATION.



Sutton Agricultural Enterprises, Inc.
 Salinas, California USA 831/422-9693 or 866/280-6229
www.suttonag.com - info@suttonag.com